


Address	Ave. Centinela # 1729 Parque Industrial Cachanilla				
Lot area	33000m <sup>2</sup>	Total floor area	13500m <sup>2</sup>		
Establishment day	1996/1	Employees	468persons		
ISO14001 certification date	2000/11	ISO14001 renewed	2007/8		
Major Products	TRS Switches, Electromechanical Relays, Electronic Ballasts, Harnesses, Inverter				
Environmental Communication Information	FY2009				
Disclosure	1 items	Cisitors on Factory	0 persons	Collaboration with Municipality	1 items
Contact	Quality & Environmental Department			TEL:	011 (52 686) 5800111

**Message from Compliance Administrator**

In Panasonic Electric Works Mexicana, S.A. de C.V., we are compromised to keep and improve our environment by strongly following up our environmental policy, environmental management system ISO 14001 and the municipal, state and federal regulations to achieve the continuous environment improvement.



Compliance Administrators  
**Eng. Jose Luis Fletes.**  
Plant Manager

**Main activities in FY2009**

Target	Result
Reduce 15.75 % tons of CO2 emissions	50% tons of Reduction of CO2 emissions
Reduction on the consumption of paper	29 % of Reduction on office paper consumption
65% of Chemical Substances Reduction v/s 2007	8.5% of Chemical Substances Reduction

**Products of Environmentally-conscious information**

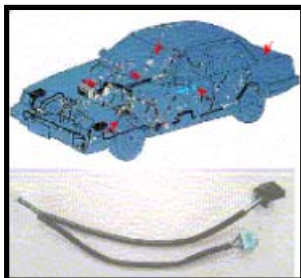


**JS-M, JJM, TN & DS4 relays**  
 - Low pick-up voltage for high ambient use  
 - Sealed construction  
 - Ultra-miniature size with universal footprint  
 - Usable at high temperature: 85°C, 185°F  
 - PC board type.  
 - Different Applications

This product is made with 40% of recycled PBT.



**Inverter Module**  
 - Luxury device use to PWG in computers, TV, DVD, Game Boy, etc., use in different GM vehicles for six assy plants.  
 - RoHS/ELV Compliance



**TRS & Harness focus to Automotive Industry**  
 - To use on automotive shifters.  
 - Door Control for Sealed Switch type.  
 - Level Custom Design.  
 -Automatic Transmissions Switch's  
 - RoHS/ELV Compliance



**Electronic Ballast's**  
 - Easy of assembly: only one unit to mount.  
 - Light weight (1.1 to 3.5lbs. depending on ballast wattage)/ Small size.  
 - Energy savings: up to 17% depending on ballast wattage vs. magnetic.  
 - Eliminates long term lamp cycling.  
 - No need to wait for lamps to cycle to identify replacement RoHS Compliance

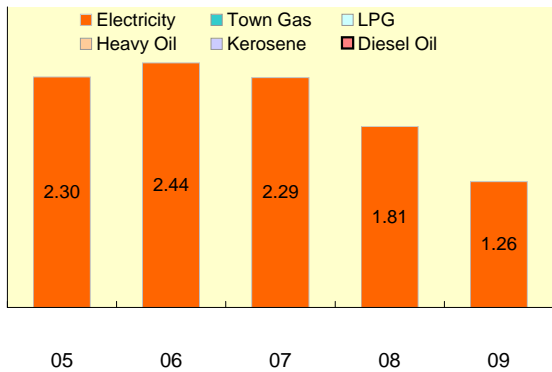
[-> link to a product information web-site.](#)

**Environmental performance data**

Year displayed in graph ex) 2009: April 1, 2008 - March 31, 2009

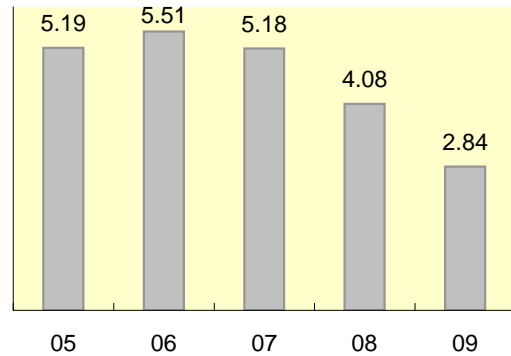
**Energy**

Unit: 1000kl



**CO2 Emission**

Unit: 1000t-CO2

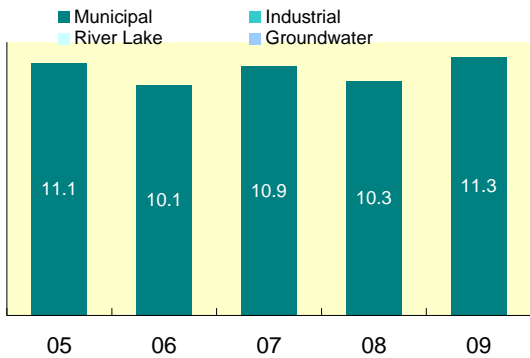


**Calculation standards**

CO2 emission = Amount of electric power use in kwh x 0.581 kgCO2/kwh

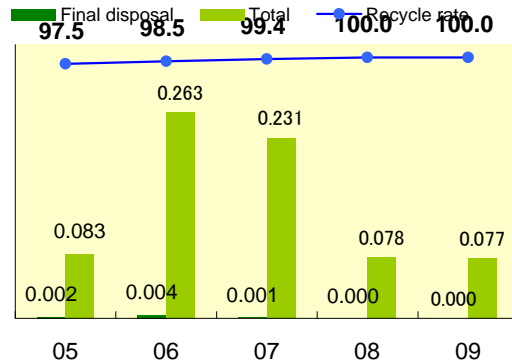
**Water**

Unit: 1000m<sup>3</sup>



**Waste**

Unit: 1000t, %

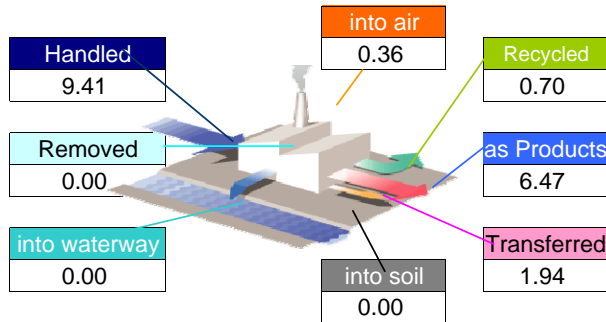


**Chemical substances**

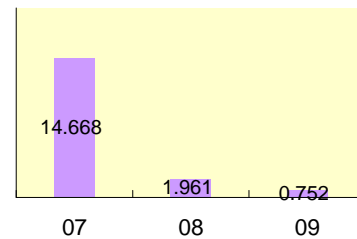
09

**Material balance of controlled substances**

FY2009



**Key target reduction substances**



About The Panasonic Group's Chemical Substances Management in Factories

[http://panasonic.net/eco/factory/chemical\\_substance/](http://panasonic.net/eco/factory/chemical_substance/)

About the above data

There is no item to report

**Compliance** FY2009**<Air pollutant measurement results>**

	Unit	Facility name	Legal limit	Voluntary limit	Average measured	Maximum measured	Measuring frequency
SOx	Nm <sup>3</sup> /h	N/A					
NOx	ppm	N/A					
Particulate	g/Nm <sup>3</sup>	N/A					

**<Water pollutant measurement results>**

	Unit	Facility name	Legal limit	Voluntary limit	Average measured	Maximum measured	Measuring frequency
COD	mg/l	N/A					
BOD	mg/l	N/A					
Nitrogen	mg/l	N/A					
Phosphorus	mg/l	N/A					

**<Noise and vibration>**

	Unit	Measurement Area	Legal limit	Voluntary limit	Average measured	Maximum measured	Measuring frequency
Noise	dB	DT Compressors	N/A	68.00	65.87	70.97	1time/year
		NT Compressors	N/A	65.00	59.28	64.83	1time/year
Vibration	dB	DT N/A					
		NT N/A					

\*Legal limit: The strictest value out of those specified by laws, ordinances or agreements.

\*N/A(not applicable):The meaning when the facility is exempted from the regulation.

**About excess of legal limit value**

There is no item to report

**Improvement of direction by government, or point outs by neighbor**

Occurrence situation	Countermeasure
There is no item to report	

**Environmental Policy**

The 3 most important aspects of the Environmental Policy from Panasonic Electric Works Mexicana are the following:

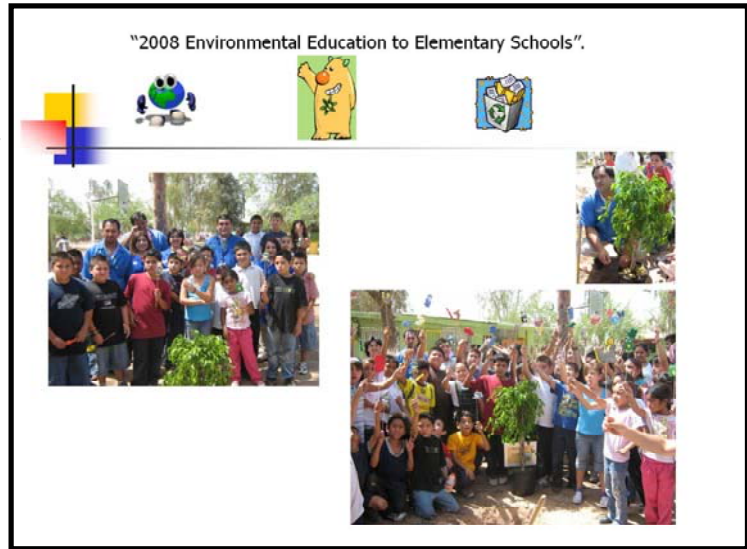
- 1) Pollution Prevention
- 2) Environmental Laws Follow Up
- 3) Continuous Improvement

**Aiming to reduction of environmental impact**

Panasonic Electric Works Mexicana promotes, internally and externally, continual reduction of inefficiencies in the consumption of electric power, water and other sources of energy and is committed to implementing efficient processes and systems of control for production lines and work areas, we emphasize the use of processes that will have no negative impact on the environment.

**Environmental Education to Elementary Schools**

Since 2000, we visit (at least) one elementary school per year, to teach children's the importance of environmental conservation including subjects like:  
 value & safe of water,  
 value & safe of energy and  
 recycled & safe of paper.



As part of Panasonic commitment to protect the environment and our contribution to community on 2008 we organized the event "**Panasonic for a Green Mexicali**". All PEWMEX environmental committee members took part in this event. A total of 38 trees were planted. 35 trees were planted, the basketball & playground areas were painted and all the area was cleaned.



### Environmental Communication

- Internal Communication

We have periodical trainings to all employees to promote Environmental Management System, Environmental Projects & Environmental Regulations.



### Emergency preparedness and response

#### About our concept and training plan

We have a system manual and response procedures for emergency response based on national regulations.

Emergency team conducted training activities to all employees regularly (i.e.. Evacuation drill on November 2008)

