


PT. Panasonic Electric Works Mitra Indonesia

Panasonic Group Site Report 2009
 FY2009 :April 1, 2008 - March 31, 2009

Address	Kawasan Industri Menara Permai, Jl. Raya Narogong Km. 23.8, Cileungsi, Bogor 16820, Jawa Barat, Indonesia				
Lot area	47480m ²	Total floor area	13956m ²		
Establishment day	1991/9	Employees	397persons		
ISO14001 certification date	2000/4	ISO14001 renewed	2008/8		
Major Products	Access Floor & accessories, Steel Box & accessories, Base Fan,				
Environmental CommunicationFY2009					
Information disclosure	1items	visitors on factory tour	0persons	collaboration with municipality	0items
Contact	Environment & Development Dept.		TEL:	62-21-8230054	

Message from Compliance Administrator

PT. Panasonic Electric Works Mitra Indonesia (PEWMID) is one of subsidiary of Panasonic Electric Works Group. The company produces Access Floor Systems and Conduit Fittings which also as a leading of housing & building products in the world that well known comprehensively. PT. PEWMID will be focused and targeted on clean production without environmental impact for our nature. To make our target achieve, we do the following :

1. Improvement on environmental performance and preservation continuously and to monitor, evaluate and control the environmental impact regularly.
2. To comply with any environmental regulations and policies.
3. To apply mechanism system of the environmental process that we have developed for re-cycle activities in order to use materials efficient and effectively which reduce the impact of material waste that will save our nature and energy.



Compliance Administrators

Masahiko Murata

Main activities in FY2009

Target	Result
Energy reduction for Electricity up to 15 %.	Reduce Electricity 890.889 kWh / year (24,5 %) or CO2 emissions 638.7 ton / year.

Products of Environmentally-conscious information



Access Floor Systems
 creating an efficient intelligent office & quick accesses to services for relocation, expansion & upgrades.

Production process which RoHS compliant.



Residential Switch Boxes
 Plastic Switch Boxes for easier cable wiring work.

Made of PVC without Pb contain.



Steel Switch Boxes
 Square & Circular Surface Boxes for conduit fittings.

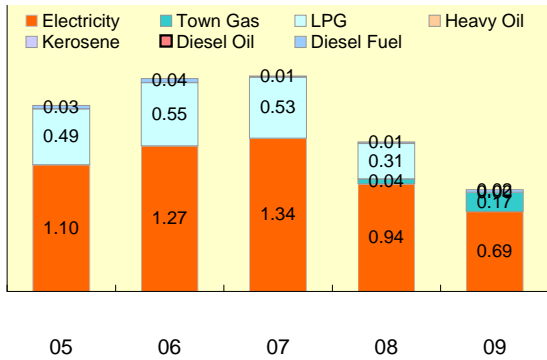
Products finished with Zinc plating & Cr+3.

Environmental performance data

Year displayed in graph ex) 2009: April 1, 2008 - March 31, 2009

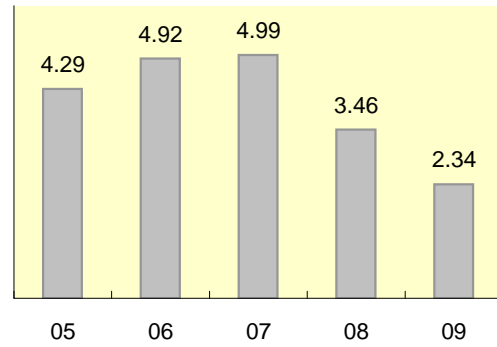
Energy

Unit: 1000kl



CO2 Emission

Unit: 1000t-CO2

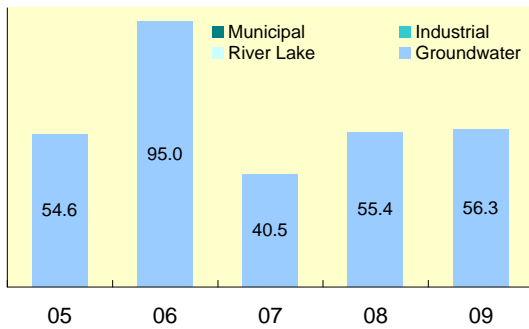


Calculation standards

CO2 emission = (amount of electric power use in kWh x 0.7168 kgCO2/kWh)
+ (amount of town gas use in m3 x 2.290 kgCO2/m3) + (amount of diesel fuel use in l x 2.60 kgCO2/l)

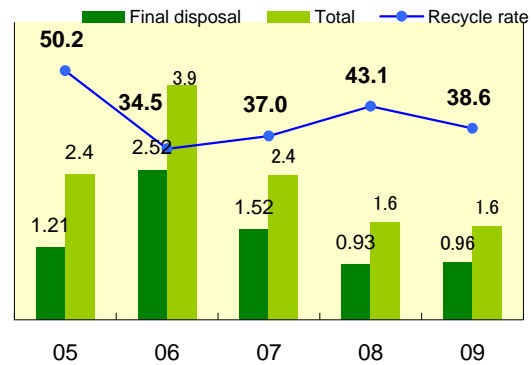
Water

Unit: 1000m³



Waste

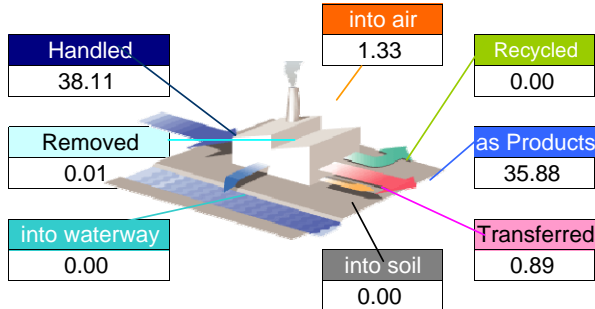
Unit: 1000t, %



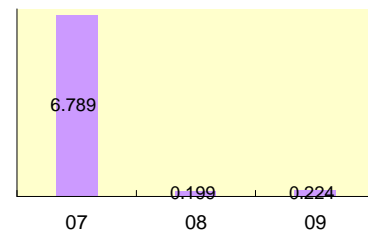
Chemical substances

09

Material balance of controlled substances FY2009



Key target reduction substances



About The Panasonic Group's Chemical Substances Management in Factories

http://panasonic.net/eco/factory/chemical_substance/

About the above data

There is no item to report.

Compliance**FY2009****<Air pollutant measurement results>**

	Unit	Facility name	Legal limit	Voluntary limit	Average measured	Maximum measured	Measuring frequency
SOx	Nm ³ /h	Exhaust Bottom Washer	800.00	400.00	3.01	6.00	2times/1year
		Exhaust Painting Washer	800.00	400.00	2.01	4.00	2times/1year
		Exhaust Painting Oven	800.00	400.00	2.01	4.00	2times/1year
NOx	ppm	Exhaust Bottom Washer	1000.00	500.00	5.55	10.00	2times/1year
		Exhaust Painting Washer	1000.00	500.00	3.03	6.00	2times/1year
		Exhaust Painting Oven	1000.00	500.00	4.03	8.00	2times/1year
Particulate	g/Nm ³	Exhaust Bottom Washer	350.00	175.00	1.97	3.90	1time/1year
		Exhaust Painting Washer	350.00	175.00	1.78	3.60	1time/1year
		Exhaust Painting Oven	350.00	175.00	2.27	4.50	1time/1year

<Water pollutant measurement results>

	Unit	Facility name	Legal limit	Voluntary limit	Average measured	Maximum measured	Measuring frequency
COD	mg/l	Waste Water Treatment Sewer	300.00	100.00	68.91	298.00	1time/1month
		North East Sewer	300.00	100.00	94.08	154.00	1time/1month
BOD	mg/l	Waste Water Treatment Sewer	150.00	50.00	42.06	83.60	1time/1month
		North East Sewer	150.00	50.00	23.13	65.00	1time/1month
Nitrogen	mg/l	N/A					
Phosphorus	mg/l	N/A					

<Noise and vibration>

	Unit	Measurement Area	Legal limit	Voluntary limit	Average measured	Maximum measured	Measuring frequency
Noise	dB	DT 1000 T Press Machine	85.00	80.00	81.40	84.30	1time/3months
		NT N/A					
Vibration	dB	DT N/A					
		NT N/A					

*Legal limit: The strictest value out of those specified by laws, ordinances or agreements.

*N/A(not applicable):The meaning when the facility is exempted from the regulation.

About excess of legal limit value

There is no item to report.

Improvement of direction by government, or point outs by neighbor

Occurrence situation	Countermeasure
There is no item to report.	

Environmental Policy

Philosophy + Quality & Environment Policy

1. Philosophy :

- With the principle of 'Quality First', Panasonic Electric Works Mitra Indonesia deliver the best satisfaction & convenience sustainable to customers as well as to take care of the harmony and togetherness with community and environment.

2. Quality & Environment Policy :

- To implement the Quality & Environment Management System compliance on sustainable improvement & review on compatibility and effectiveness to produce the best quality products which reduce environmental impact.
- To define the goal, target of quality and environment in each semester for policy realization with all employees.
- To perform on saving material consumption, natural resources and energy as well as developing recycle activities and reducing waste yielded with effectiveness usage.
- To comply regulation and policies that related with environmental.
- To control and monitoring environment activities to avoid direct & indirect impact to environmental, health & welfare for human, animal & nature.
- To communicate and inform to all employees and community comprehensively.

Aiming to reduction of environmental impact



First Stage Trial of Reuse Cement Slurry

To reduce the amount of Cement Waste after Waste Water Treatment, we tried to reuse Cement Slurry that drop from the production process to become Concrete Block.

Environmental Communication



Environment Management & Monitoring Effort

As government regulation, we have to report our environmental activities every six months. These reports contents our environment monitoring by third party laboratory : clean water, waste water, noise (indoor & outdoor), ambient air (indoor & outdoor) and air emission (factory).

Emergency preparedness and response

Concept and Training Plan

Firefighting training once a year and performed on December 18, 2008.



Purpose of a training

This drill teach employees how to use fire extinguisher & water hydrant.