

Panasonic Electric Works(Ayuthaya) Co. Ltd.

Panasonic Group Site Report 2009
FY2009 :April 1, 2008 - March 31, 2009

Address	1/69 Moo 5 , Rojana Industrial Park , T.Kanham , A. U-Thai , Ayuthaya				
Lot area	117060m ²	Total floor area	47534m ²		
Establishment day	1994/9	Employees	2264persons		
ISO14001 certification date	1994/11	ISO14001 renewed	2008/12		
Major Products	Plastic Material, Copper Clad Laminated, Electric Construction Material, Lighting products,				
Environmental CommunicationFY2009 Information disclosure	1items	visitors on factory tour	175persons		collaboration with municipality
Contact	Mr.Jedsada Lohsomboon		TEL: 035-330-845-52 ext 4064		

Message from Compliance Administrator

Panasonic Electric Works,(Ayuthaya) Co.; Ltd shall continuously improve the local environmental in our community to ensure the lowest consumption of resources and amount of waste also the minimize the use of harmful substances.



Compliance Administrators
Mr.Jedsada Lohsomboon

Main activities in FY2009

Target	Result
1. 7.559 % CO ₂ reduction compare by total CO ₂ emission amount of FY 2009	1. 11% reduction from FY 2009
2. 2.5% reduction compare by the total of water usage on FY2009	2. 4.78% reduction from FY 2009
3. 3% waste reduction compared by waste generate as of FY 2009	3. 4.43% reduction from FY 2009

Products of Environmentally-conscious information



Product name
Amino Molding Compound Encapsulation Material
Point of environmentally-conscious
Eco-material : RoHs compliance



Product name
Copper Clad Laminate
Point of environmentally-conscious
Non use antimony



Product name
Wiring Devices , Breaker
Point of environmentally-conscious
Passive - infrared products



Product name
Lighting Product
Point of environmentally-conscious
1. Electronic inverter
2. Pb free product

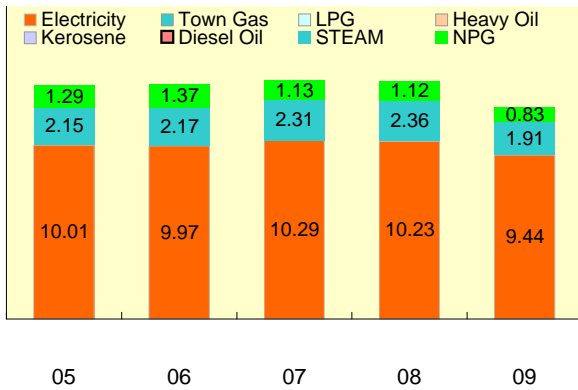
-> link to a product information web-site.

Environmental performance data

Year displayed in graph ex) 2009: April 1, 2008 - March 31, 2009

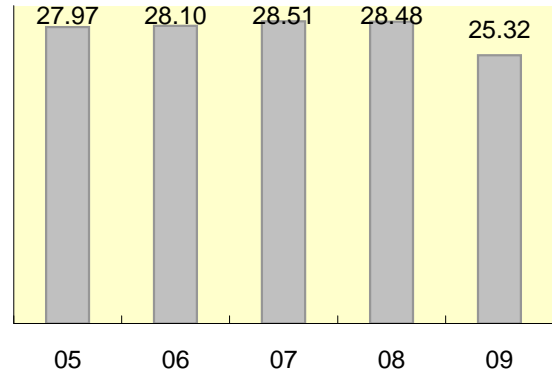
Energy

Unit: 1000kl



CO2 Emission

Unit: 1000t-CO2

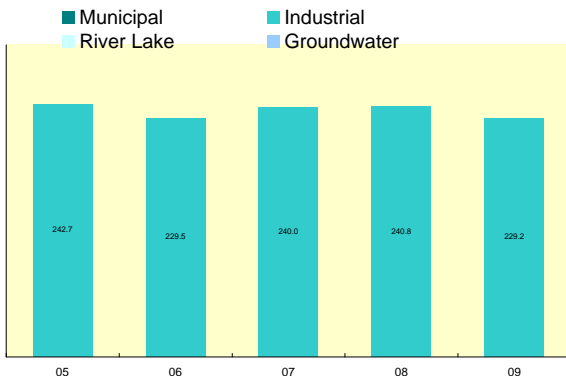


Calculation standards

CO2 emission = (Amount of electric power use in kwh x 0.5385 kgCO2/kwh)
+ (Amount of STEAM use in m3 x 0.156 kgCO2/m3)
+ (Amount of NPG use in m3 x 0.056 kgCO2/m3)

Water

Unit: 1000m³



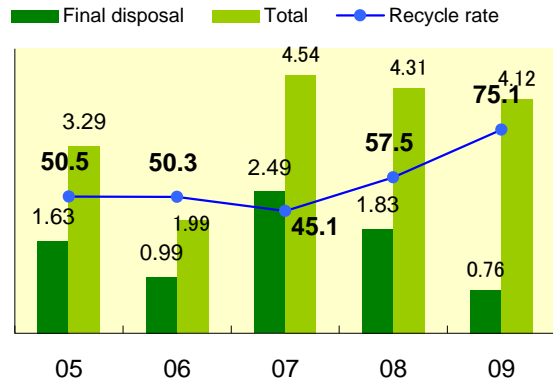
Circulated water

FY2009

103,832.00 m³

Waste

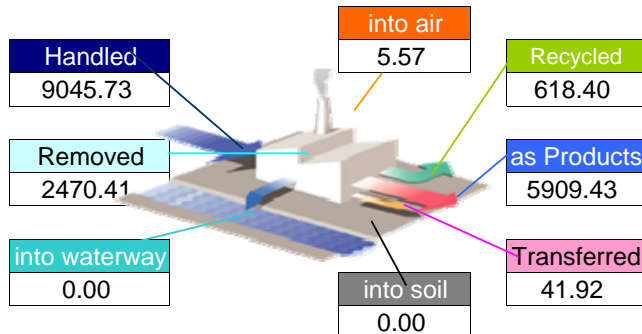
Unit: 1000t, %



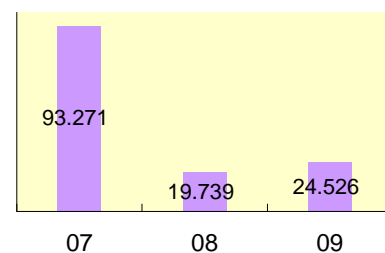
Chemical substances

09

Material balance of controlled substances FY2009



Key target reduction substances



About The Panasonic Group's Chemical Substances Management in Factories

http://panasonic.net/eco/factory/chemical_substance/

About the above data

There is no item to report.

Compliance

FY2009

<Air pollutant measurement results>

	Unit	Facility name	Legal limit	Voluntary limit	Average measured	Maximum measured	Measuring frequency
SOx	Nm ³ /h	N/A					
NOx	ppm	N/A					
Particulate	g/Nm ³	Dust collector PM	400.00	300.00	0.40	0.54	twice a year
		Big dust collector CCL	400.00	300.00	2.68	2.68	twice a year

<Water pollutant measurement results>

	Unit	Facility name	Legal limit	Voluntary limit	Average measured	Maximum measured	Measuring frequency
COD	mg/l	Pit No.1	1250.00	1000.00	473.45	920.00	once a month
		Pit No.2	1250.00	1000.00	229.64	288.00	once a month
		Pit No.3	1250.00	1000.00	84.27	147.00	once a month
BOD	mg/l	Pit No.1	500.00	300.00	232.18	539.00	once a month
		Pit No.2	500.00	300.00	89.36	110.00	once a month
		Pit No.3	500.00	300.00	34.09	148.00	once a month
Nitrogen	mg/l	N/A					
Phosphorus	mg/l	N/A					

<Noise and vibration>

	Unit	Measurement Area	Legal limit	Voluntary limit	Average measured	Maximum measured	Measuring frequency
Noise	dB	DT Metal Part	90.00	85.00	80.23	81.10	once a year
		NT N/A					
Vibration	dB	DT N/A					
		NT N/A					

*Legal limit: The strictest value out of those specified by laws, ordinances or agreements.

*N/A(not applicable):The meaning when the facility is exempted from the regulation.

About excess of legal limit value

There is no item to report.

Improvement of direction by government, or point outs by neighbor

Occurrence situation	Countermeasure
There is no item to report.	

Environmental Policy

Panasonic Electric Works,(Ayuthaya)Ltd. is committed to playing its part in global environmental protection and to helping create a society in which continuous development can be sustained in harmony with the environment.

We will pursue strategies that comply with environment considerations and quality of life improvement . In terms of each product's life cycle.,

We will offer products and services which improve the quality of life while minimising the burden on the environment.

To accomplish this , we will continually enhance our environment management system . In addition , all employee will actively work towards social development .

1. Environmental objectives and targets will be established and promoted.
2. Due consideration will be paid to the environment , including relevant regulation and community interests.
3. Supply materials and parts do not burden the environment (green supply) , including control of hazardous chemical substances in products and material.
4. Decrease the burden on the environment with production activities that prevent pollution so as to live together harmoniously with local communities.
5. We will promote education and awareness about the environment.
6. We will make social contributions by supporting activities at both a national and a local community level
7. We will disclosed environment indicators to both employees and the public.

Aiming to reduction of environmental impact



New dust collector

Has installed 3 sets of dust collectors at compression room to reduce particulate that release into atmosphere.



Exhaust hood for pad printing machine

Has installed exhaust hood for pad printing machine to reduce volatile organic compounds that release into atmosphere.



Noise control room

Has installed noise control room to reduce noise impact.



Smoking room

Has installed smoking room to reduce air pollution.

Environmental Communication



External communication

For ensure that any persons performing tasks for it or on its behalf that have the potential to cause a significant environmental impact(s) , we communicate environmental policy,environmental impact and company regulation to our vendors and subcontractors .

Internal communication

With regard to its environmental aspect and environmental management system and eco-ideas to all employee , we have information bulletin board , EH&S link and have periodical internal sub-scrips and public voice and morning talks .
 Otherwish we had setting up the Environmental and Safety Day to promote environmental and safety awareness .



Emergency preparedness and response

About our concept and training plan

We identified potential emergency situation and potential accidents that can have an impacts on the environment. We have periodically test for chemical spill control and fire fighting for once a year .

Radiation leak response practise



Chemical spill response



Basic fire fighting practise



Evacuation practise

