


PEWTH : Panasonic Electric Works (Thailand) Co., Ltd.

Panasonic Group Site Report 2009
 FY2009 :April 1, 2008 - March 31, 2009

Address	Navanakorn Industrial Estate ,Zone 3 ,No. 106, Moo 18 Khlong Nueng,Khlong Luang , Pathumthani 12120 ,Thailand				
Lot area	62301m ²	Total floor area	36596m ²		
Establishment day	1988/4	Employees	2667persons		
ISO14001 certification date	1999/10	ISO14001 renewed	2008/9		
Major Products	Home Appliance, Relay,				
Environmental CommunicationFY2009 Information disclosure	7items	visitors on factory tour	0persons		collaboration with municipality
Contact	Administration		TEL: +66-2-529-1671		

Message from Compliance Administrator

PEWTH has established the environmental management system and maintain all activities to comply with applicable laws and other requirements. In FY 2010 we continually improve system management and response to the global Panasonic, eco-ideas strategy that promoted with our collective wisdom focusing on co2 reduction with many activities such as energy conservation, waste reduction, air emission reduction, tree planting project.



Compliance Administrators
Mr. Kazuo Konishi

Main activities in FY2009

Target	Result
1.) Energy Saving : All 10 % from FY 2008	7 % Reduction
2.) Paper Usage Reduction : All 5 % from FY 2008	9.11 % Reduction
3.) General Waste Reduction : All 5 % from FY 2008	10.83 % Reduction
4.) Chemical Vapor Reduction : All 20 % air emission from FY 2008	73.54 % Reductiion

Products of Environmentally-conscious information



Product
 Home Appliance : Packaging of Hair Dryer EH-NA 50 Model

Point of environmentally-conscious
 - Change from PP SHEET Filler >>> Paper Filler
 - Select & Evaluation Supplier follow Company Regulation
 - Material/Raw Material under RoHS Requirement

Product
 Home Appliance : Packaging of Hair Dryer EH-NE 30 Model

Point of environmentally-conscious
 - Change from PP SHEET Filler >>> Paper Filler
 - Select & Evaluation Supplier follow Company Regulation
 - Material/Raw Material under RoHS



Product
 Automotive Controls : LKF - Relay

Point of environmentally-conscious
 - Select & Evaluation Supplier follow Company Regulation
 - Material/Raw Material under RoHS Requirement

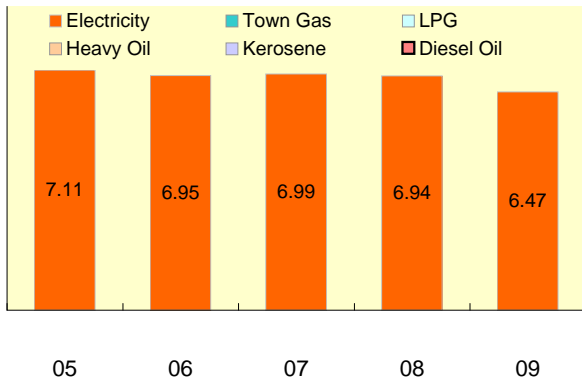
-> link to a product information web-site.

Environmental performance data

Year displayed in graph ex) 2009: April 1, 2008 - March 31, 2009

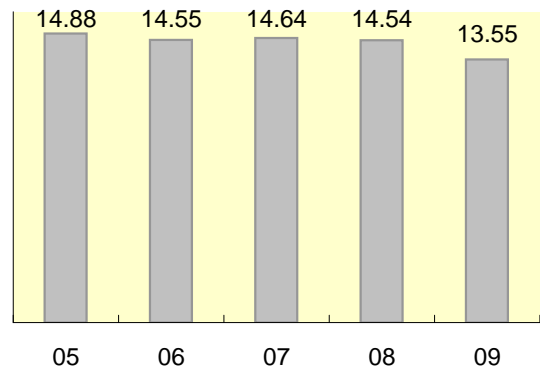
Energy

Unit: 1000kl



CO2 Emission

Unit: 1000t-CO2

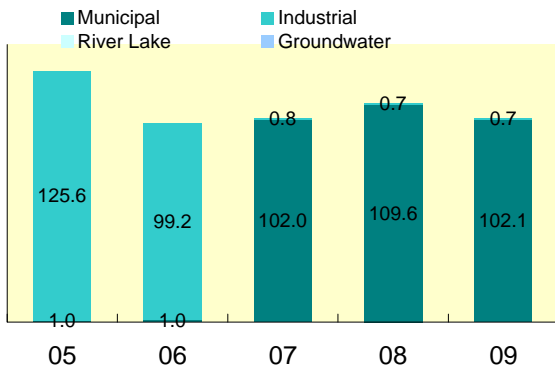


Calculation standards

CO2 emission = (Amount of electric power use in kwh x 0.5385 kgCO2/kwh)

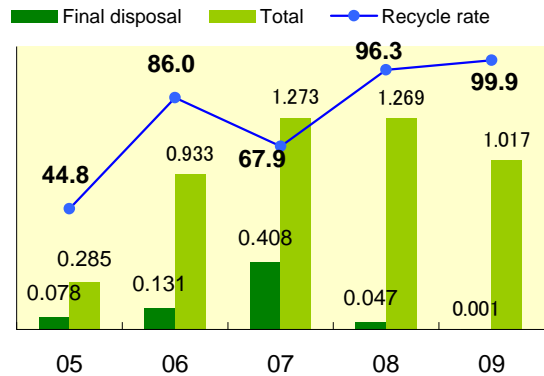
Water

Unit: 1000m³



Waste

Unit: 1000t, %

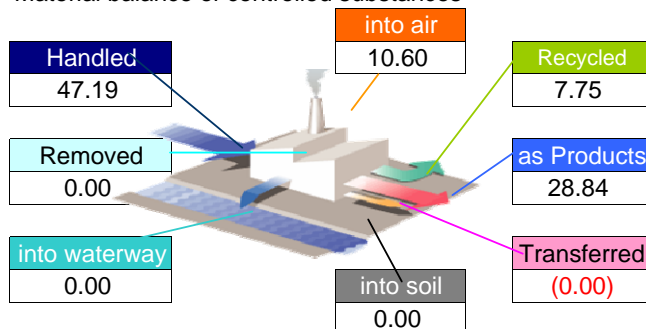


Chemical substances

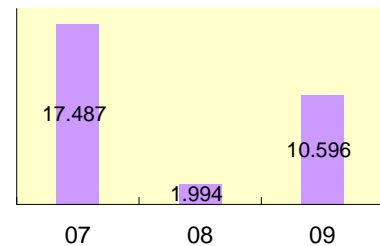
09

Material balance of controlled substances

FY2009



Key target reduction substances



About The Panasonic Group's Chemical Substances Management in Factories
http://panasonic.net/eco/factory/chemical_substance/

About the above data

Energy and CO2 Emission (only Electric power) : We have improvement plan of continuous CO2 Reduction

Water usage Reduction : We have improvement plan of water equipment such as change a tap water type

Waste Reduction : We continue improve the recycling rate and total general waste to meet target FY 2010

Chemical Reduction : We have the improvement plan of Coating room and exhaust in FY 2010 to reduce air emission of chemical vapor

Compliance

FY2009

<Air pollutant measurement results>

	Unit	Facility name	Legal limit	Voluntary limit	Average measured	Maximum measured	Measuring frequency
SOx	Nm ³ /h	Production Control HA	13.00	13.00	0.00	0.00	2times/year
		Warehouse HA	13.00	13.00	0.00	0.00	2times/year
		Production Control AC	13.00	13.00	0.00	0.00	2times/year
NOx	ppm	N/A					
Particulate	g/Nm ³	Exhaust Relay No.14	400.00	400.00	4.24	5.94	2times/year
		Exhaust Photo MOS No.16	400.00	400.00	4.27	6.50	2times/year
		Exhaust CM/CV No.17	400.00	400.00	5.03	7.70	2times/year

<Water pollutant measurement results>

	Unit	Facility name	Legal limit	Voluntary limit	Average measured	Maximum measured	Measuring frequency
COD	mg/l	Front of plant drainage	600.00	600.00	218.18	387.00	1time/month
BOD	mg/l	Front of plant drainage	450.00	450.00	107.36	281.00	1time/month
Nitrogen	mg/l	N/A					
Phosphorus	mg/l	N/A					

<Noise and vibration>

	Unit	Measurement Area	Legal limit	Voluntary limit	Average measured	Maximum measured	Measuring frequency
Noise	dB	DT Infront of Factory	70.00	70.00	59.70	85.70	2times/year
		NT Infront of Factory	70.00	70.00	59.10	93.60	2times/year
Vibration	dB	DT N/A					
		NT N/A					

*Legal limit: The strictest value out of those specified by laws, ordinances or agreements.

*N/A(not applicable):The meaning when the facility is exempted from the regulation.

About excess of legal limit value

There is no item to report .

Improvement of direction by government, or point outs by neighbor

Occurrence situation	Countermeasure
There is no item to report .	

Environmental Policy

As an environmentally concerned organization, Panasonic Electric Works (Thailand) Co.,Ltd. adheres to the following environmental policy ;

1. To utilize energy and natural resources more efficiently,economically and comply with business, impact of its activities, products, raw materials and services.
2. To prevent any aspects from product design,source and new activities of company those may adverse effects to environment.
3. To comply with regulatory standards set by the government and related bodies, and use them as the company's basic environmental standards.
4. To establish the objective & target by consideration of environmental aspect improvement.
5. To communicated, both internally and externally, the company's environmental policy and promote environmental awareness amongst employees.
6. To welcome feedback from both internal and external organisations towards the continual development of the company's environmental programme and role in society and customer satisfaction.

Aiming to reduction of environmental impact



Air Emission Reduictiion of Chemical Vapor

- We renovated Coating Room by change Manual 1 Boot
 (More Spray paint to Automotic 1 Boot (Electrostatic gun))

Panasonic’s Mangrove Reforestation at Bangpoo resort, Samutprakarn on October 12, 2008

- Volunteer of PEWTH 12 persons. Participate with Panasonic Eco Relay Project .
- Tree planting 2,500 can reduce CO2 50 tons.



“eco ideas” for Everybody/ Everywhere

- Tree Planting Project :Panasonic Electric Works(Thailand) Ltd.Forest 2008
- Project : Panasonic Electric Works (Thailand)Ltd.Forest 2008
- Date : Dec,27, 2008
- Trees : 2,000/ Orang Jessamine
- Place : Panasonic Electric Works (Thailand)Ltd. (Pathumthani)
- Person in charge : Executive &Employee PEWTH

Environmental Communication



World Environmental Day 2008

- Representative persons of Internal Auditor and Energy Saving committees participate in World of Environment Day 2008 on 5 June ' 08 total 12 persons
- Slogan " CO2 KICK THE HABIT! TOWARDS A LOW CARBON ECONOMY

Environment Energy and Safety day 2008 on July 4&7 '2008

- We was hold Environment Energy and Safety day 2008 to promote and communicate with all employees for
 - Environment knowledge : ISO 14001 ,Global Warming
 - Energy Saving /Conservation : Electricity saving , Water saving
 - Safety Knowledge : OHSAS 18001, Safety at work
 - Participants : All employees. 2,623 persons.



Energy Saving Committee Activity



Energy Saving committee 16 persons visited to NOK Precision co.ltd on June 20,2008 for learning the energy measures for apply in PEWTH.

Energy Saving committee 22 persons visited to Energy Conservation Building of Thailand on October 16,2008 for learning the energy measures for apply in PEWTH.



Environment and Energy Saving Parade on Sport Day (27 Dec ' 2008)

- PEWTH was hold environment and energy saving parade on sport day, including Communication of Energy saving, CO2 Reduction and Natural Resource usage by efficiency



Morning Meeting Every Day

- Environment Energy and Safety Communication
- Promotion and awareness of Energy saving and Natural Resource Conservation (Usage by efficiency)

Environment Fuctional Group visited Wongpanit Recycle on May 2008

- Representative person from PEWTH 1 persons.



Emergency preparedness and response

Emergency preparedness and response Plan

PEWTH set training and practice of Annual Emergency preparedness and response in training year to relevant employees and comply to laws as below :

- Fire Evacuation : Once a year
- Flood Practice : Once a year
- Chemical drill leak and response : Once a year



Fire Evacuation

Date : 10 April ' 2008 Time : 14.25 - 14.45

Location : PEWTH

Participants : All Employees 2,623 persons.



Flood Practice

Date : 15 September ' 2008 Time : 10.00 - 11.30

Location : PEWTH

Participants : Concerned Function 17 persons.



Chemical Drill (Training & Practice)

Date : 19 August ' 2008 Time : 9.00-16.00

Location : PEWTH

Participants : 44 persons.