


Panasonic Electric Works Asia Pacific Pte.Ltd.

Panasonic Group Site Report 2009
FY2009 :April 1, 2008 - March 31, 2009

Address	101 THOMSON ROAD, #25-03/05 UNITED SQUARE, SINGAPORE 307591				
Lot area	1100m ²	Total floor area	1028m ²		
Establishment day	1990/1	Employees	92persons		
ISO14001 certification date		ISO14001 renewed			
Major Products					
Environmental CommunicationFY2009					
Information disclosure	1 items	visitors on factory tour	0persons	collaboration with municipality	0items
Contact	Administration Department		TEL:	6359 2103	

Message from Compliance Administrator

1) In our Singapore sales office, we had placed 3 recycle boxes for staff to collect plastic, paper & cans, this is for us to do our part in conserving & enhancing the world's greenery & making it a better place to stay. 2) A group of our staff had setup an ECO X'mas tree & Chinese New Year corner by using all recycle material and their photo had post onto "Denko Newsletter".



Compliance Administrators

Hiroshi Hori

Main activities in FY2009

Target

Result

In line with Cost Buster, we had size down our office space from Sep 08, in this practice, company had give away some excess furniture to staff who needed.

These excess furniture had it recycle value and this is our part to save the earth as well as part of our staff welfare program.

In Nov 08, Panasonic Group in Singapore had held it 1st "Panasonic Eco Relay 2008" join hand with the residents from one of the community and the guest of honest is our Prime Ministry Mr S L Lee.

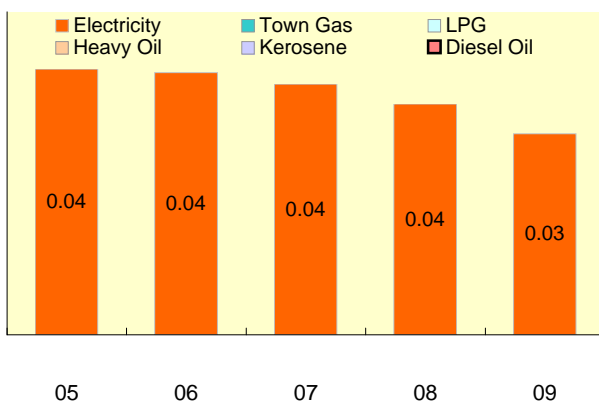
Staff from all Panasonic group in Singapore join this event and the highlights are: Fruit party, hands-on workshops such as pot gardening, complete with a family carnival of games. This is to mark on an up-and-coming fruit park in our Northern heartland of one of the park in Singapore. By joining this event, Panasonic as a group had contribute it part to do our community service to our country.

Environmental performance data

Year displayed in graph ex) 2009: April 1, 2008 - March 31, 2009

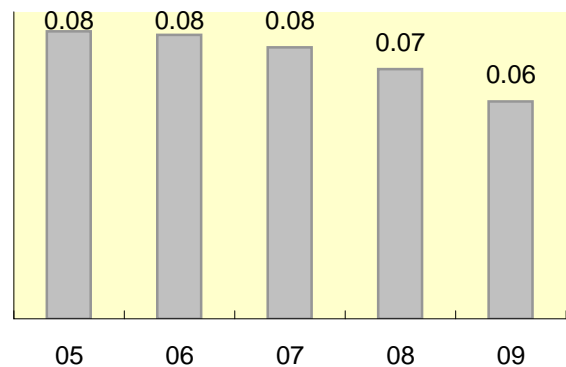
Energy

Unit: 1000kl



CO2 Emission

Unit: 1000t-CO2



Calculation standards

CO2 emission = (Amount of electric power use in kwh x 0.5268 kgCO2/kwh)