


Address	Carl-Friedrich-Gauss-Strase 3, 47475 Kamp-Lintfort,Germany				
Lot area	7500m <sup>2</sup>	Total floor area	4031m <sup>2</sup>		
Establishment day	1979/1	Employees	100persons		
ISO14001 certification date	2006/6	ISO14001 renewed	2009/2		
Major Products	LED components,				
Environmental Communication Information disclosure	1items	visitors on factory tour	0persons		collaboration with municipality
Contact	Quality Department		TEL: 0049 2842 980-0		

**Message from Compliance Administrator**

VS Optoelectronic manufactures and complements a wide array of standard LED technology products, offers a host of pre-stage service, including belting, selection and configuring of LEDs as well as extensive support in the development of tailor-made LED applications.

The most relevant environmental aspects are: Waste, electric energy consumption, natural resources and raw materials. The future objective of VSO is to reduce the environmental impact of the above relevant aspects through the activities envisaged in the 3-years Clean Factory Plan. VSO keeps up an integrated Quality (ISO 9001) - Enviroment (ISO14001) system.



Compliance Administrators

**Mr. Claus Schröder**

**Main activities in FY2009**

Target	Result
Reduction of the electric energy consumption	Energy conservation rate 3,5 %
Waste reduction	Waste reduction rate 2 %, Recycling rate 90 %
Reduce consumption of water	Water consumption reduction rate 2,5 %

**Products of Environmentally-conscious information**



**Lighting Components - OEM**

LED modules and complete systems for the lighting industrie (luminaires, architectural lighting, entertainment and decorative lighting).

**Point of environmentally-conscious**

High efficiency and long life time of VS LED products help to reduce use of energy and raw materials.



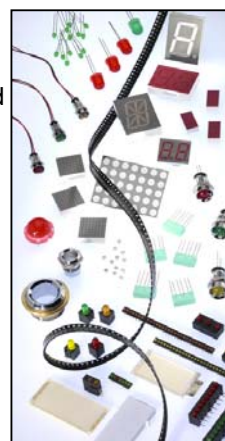
**Customer / Project Specific Solutions**

LED modules which are specially created on customer requirements based on COB- or SMD-technology.



**Point of environmentally-conscious**

Inherend part of products development is examination and evaluation of used materials` environmental impact.



**Trade - loan works**

LED housings, loan works, bending, cutting, sorting, taping, packing.

**Trade - LED**

Round LEDs (1,8 - 20mm) and SMD in standard and UHB, dot-matrix, 7-segment & alpha-numeric displays.

Distributor for Cree High Power LEDs using for trade and LED modules.

**Point of environmentally-conscious**

Regular material inspections are performed at finished and semifinished products to ensure compatibility according to European Environmental Directives (i.e. ROHS).

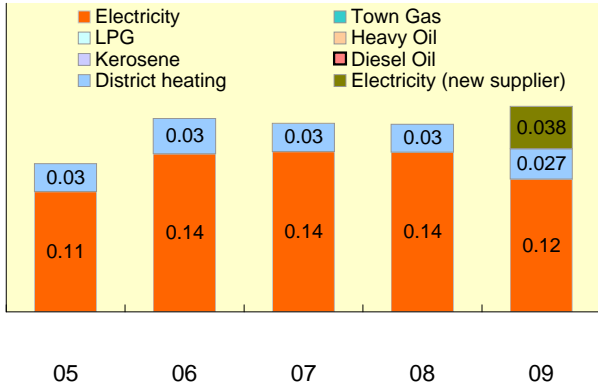
-> link to a product information web-site.

**Environmental performance data**

Year displayed in graph ex) 2009: April 1, 2008 - March 31, 2009

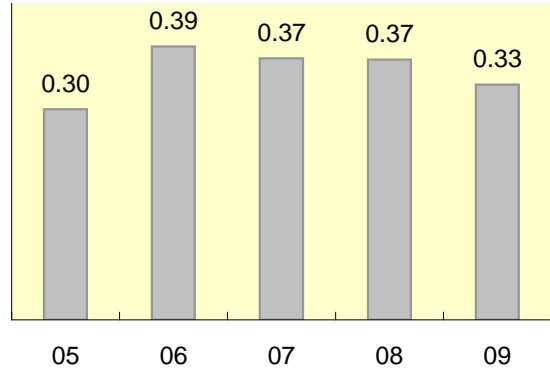
**Energy**

Unit: 1000kl



**CO2 Emission**

Unit: 1000t-CO2

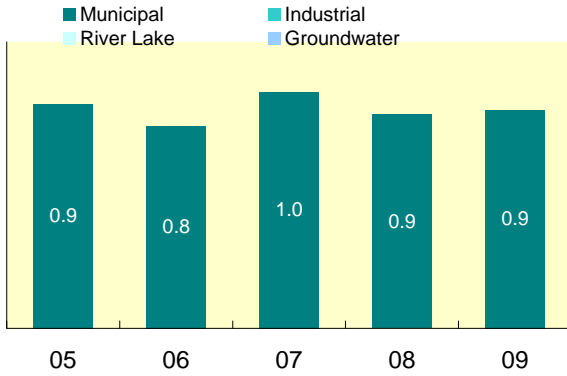


**Calculation standards**

CO2 emission = (Amount of electric power use in kwh x 0.5179 kgCO2/kwh )  
+ (Amount of district heating use in kwh x0.4kgCO2/m3)  
+ (Amount of electricity (new supplier) use in kwh x0.04kgCO2kwh)

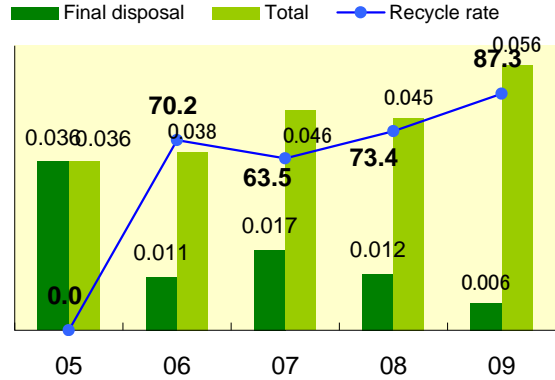
**Water**

Unit: 1000m<sup>3</sup>



**Waste**

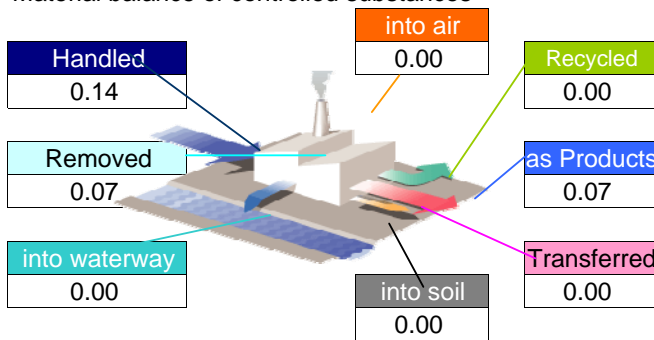
Unit: 1000t, %



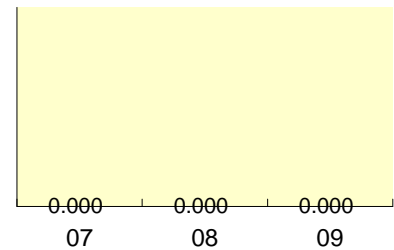
**Chemical substances**

09

Material balance of controlled substances FY2009



Key target reduction substances



About The Panasonic Group's Chemical Substances Management in Factories  
[http://panasonic.net/eco/factory/chemical\\_substance/](http://panasonic.net/eco/factory/chemical_substance/)

About the above data

There is no item to report.

**Compliance FY2009**

**<Air pollutant measurement results>**

	Unit	Facility name	Legal limit	Voluntary limit	Average measured	Maximum measured	Measuring frequency
SOx	Nm <sup>3</sup> /h	N/A					
NOx	ppm	N/A					
Particulate	g/Nm <sup>3</sup>	N/A					

**<Water pollutant measurement results>**

	Unit	Facility name	Legal limit	Voluntary limit	Average measured	Maximum measured	Measuring frequency
COD	mg/l	N/A					
BOD	mg/l	N/A					
Nitrogen	mg/l	N/A					
Phosphorus	mg/l	N/A					

**<Noise and vibration>**

	Unit	Measurement Area		Legal limit	Voluntary limit	Average measured	Maximum measured	Measuring frequency
Noise	dB	DT	around	70.00	70.00	60.00	65.00	1time/year
		NT	around	60.00	60.00	50.00	55.00	1time/year
Vibration	dB	DT	N/A					
		NT	N/A					

\*Legal limit: The strictest value out of those specified by laws, ordinances or agreements.

\*N/A(not applicable):The meaning when the facility is exempted from the regulation.

**About excess of legal limit value**

There is no item to report.

**Improvement of direction by government, or point outs by neighbor**

Occurrence situation	Countermeasure
There is no item to report.	

## Environmental Policy

The following company policy as well as the resulting objectives apply to all PEW VS personnel. Panasonic Electric Works Vossloh-Schwabe GmbH offers a complete range of components for the lighting industry all over the world.

The VS Company Management's objective is to steady strengthen and improve PEW VS's market position in order to achieve the planned economic results and, thus, to guarantee the continued existence of the company in the long term. The VS Company Management wishes to implement this policy through the achievement of the following

### Application of social responsibility

The identification of and compliance with the relevant environmental protection and industrial safety law and regulations, the prevention of the different types of pollution and the conservation of resources through the continuous improvement in products and processes always have the priority over any other objective.

VSO's aim is to deliver products of best quality and environmental friendliness.  
The objective of VSO is to reduce the environmental impact of relevant aspects.

**Aiming to reduction of environmental impact**

**Waste separation**

All offices are equipped with additive paper waste containers to improve recycling rate of used paper.

Production areas are equipped with separation containers for improved separation in waste disposal. Waste is separated into chemical substances for separate handling, recycable waste and waste for final disposal.



**Reduction of energy consumption**

100 % of the magnetic ballasts were substituted by electronic ballasts in fluorescent lamps.

Motion detectors for switching off lightings were installed in rest rooms, changing rooms when the last person leave.

VS - Optoelectronic is partner of the the European GreenLight programme. Herewith VSO commits to upgrade at least 50% of all the eligible spaces owned or reduce the total aggregate lighting electricity consumption by at least 30%.



**Environmental Communication**

**Environmental responsibilities**

Placards, posters, notices, regulary performed training - and instruction measures are used to inform and to sensitize VSO's staff according our/their environmental responsibilities.



**Emergency preparedness and response**

**About our concept and training plan**

In regulary performed trainings employees are trained how to prevent accidents and how to act in case of accidents. Employees are trained in the handling of toxic and dangerous chemicals, in waste management, in avoiding of fire, rules of conduct in case of fire and in first-aid.

**Case of a training**

Employees trained how to extinguish fire using simulated fire trouble spots. They were trained to extinguish burning gas pipes and aflamed persons.

